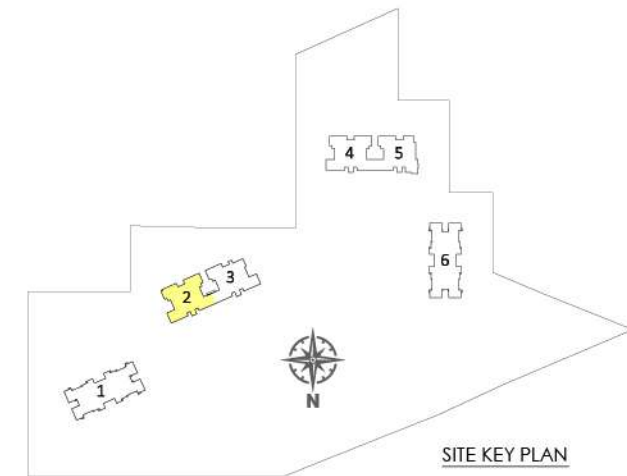
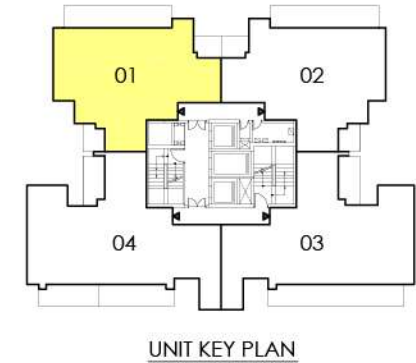
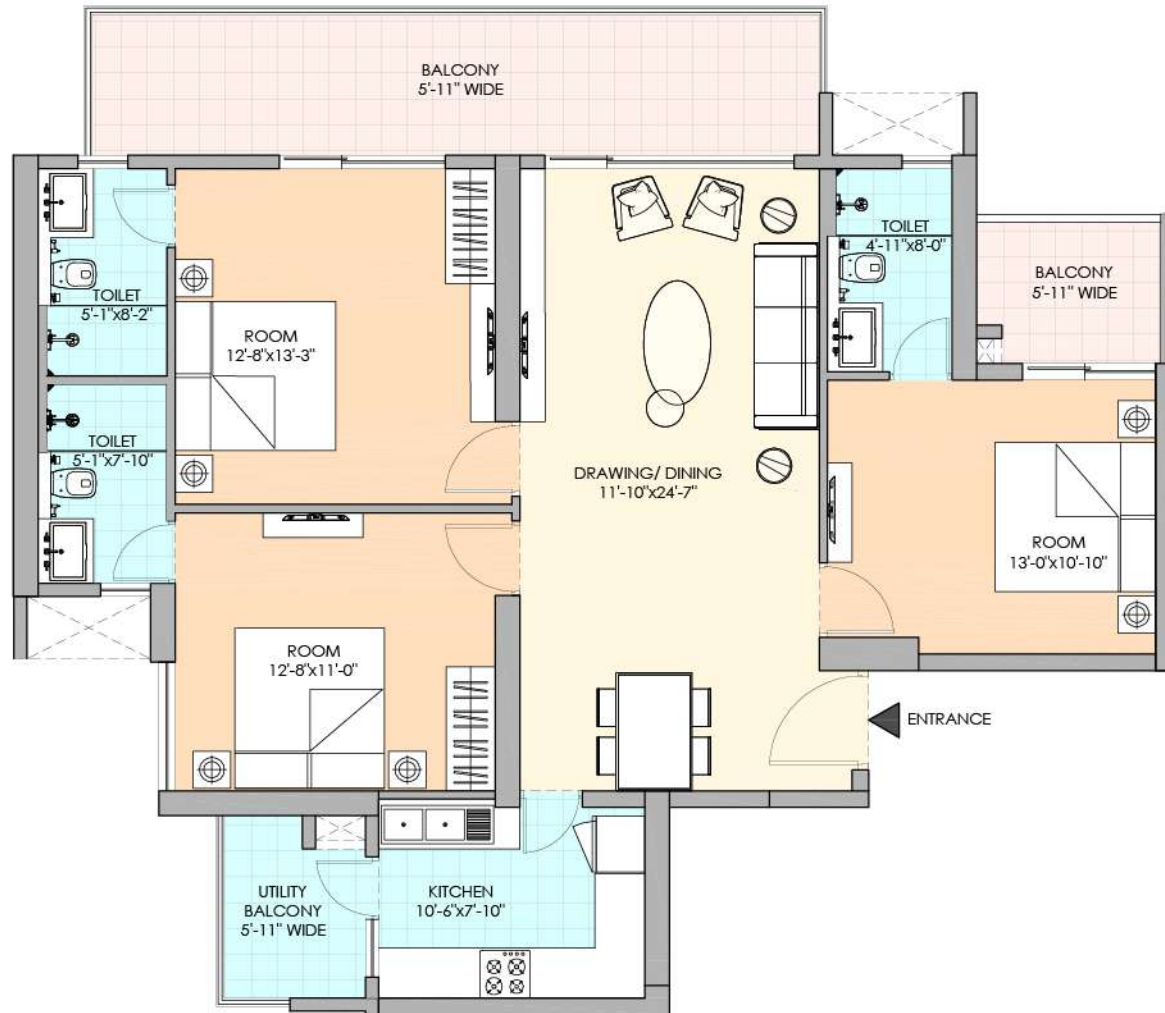


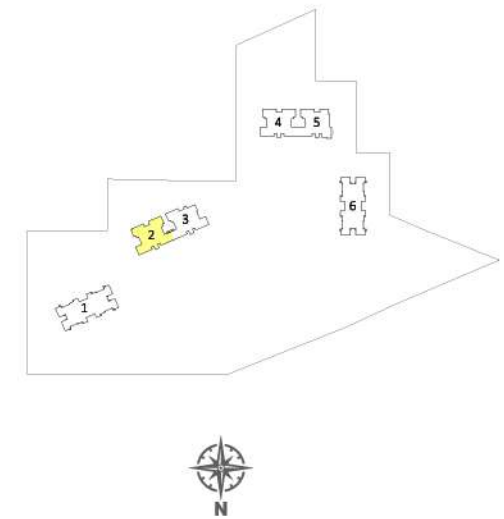
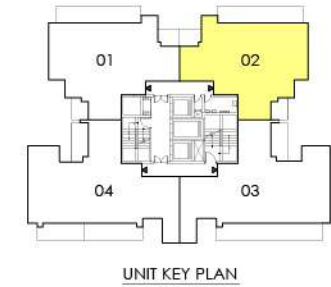
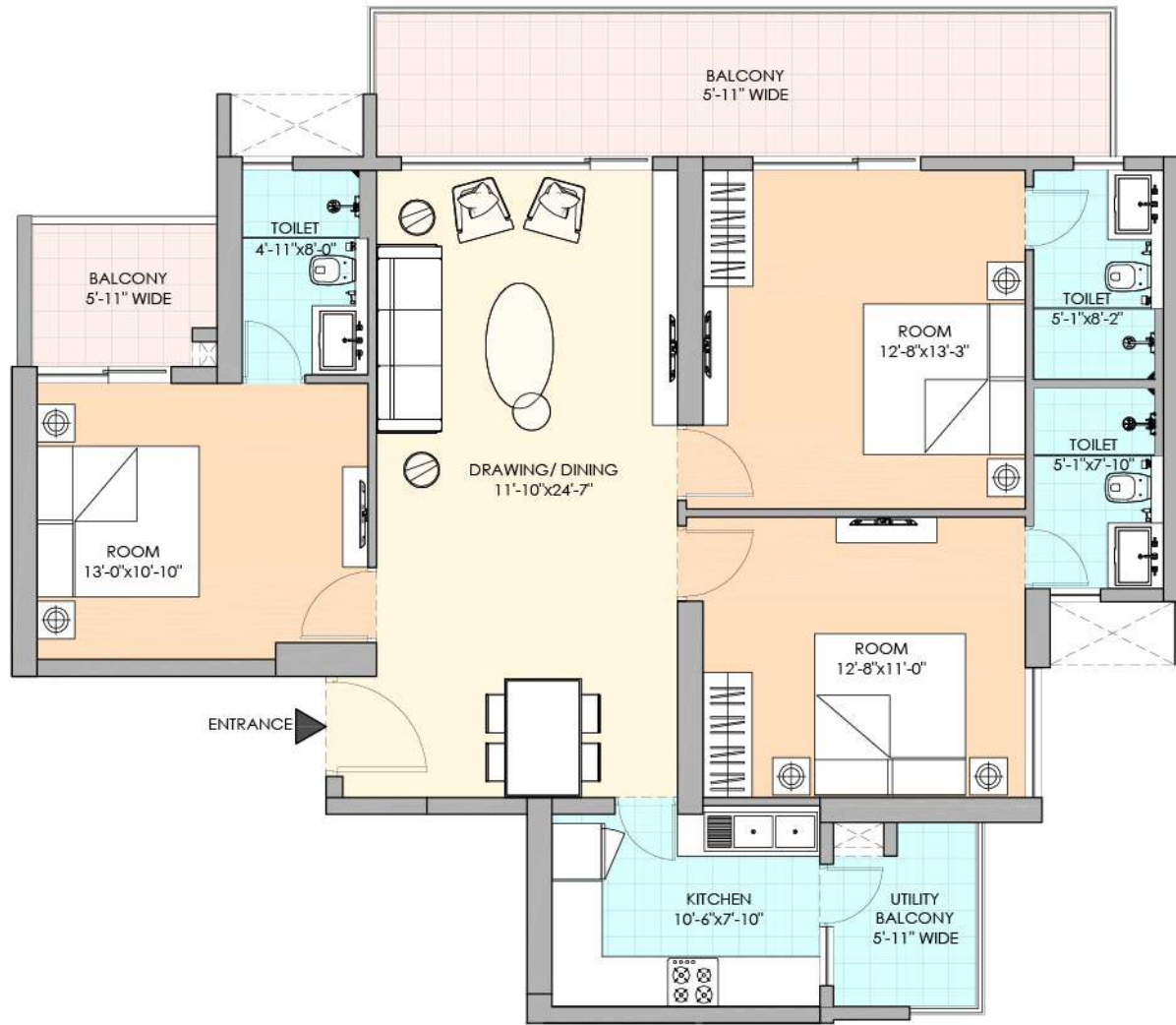
M3M
SKYCITY

SALES PLAN



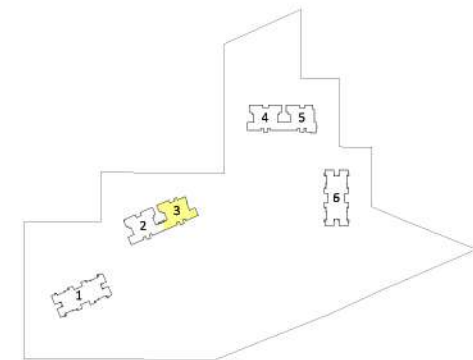
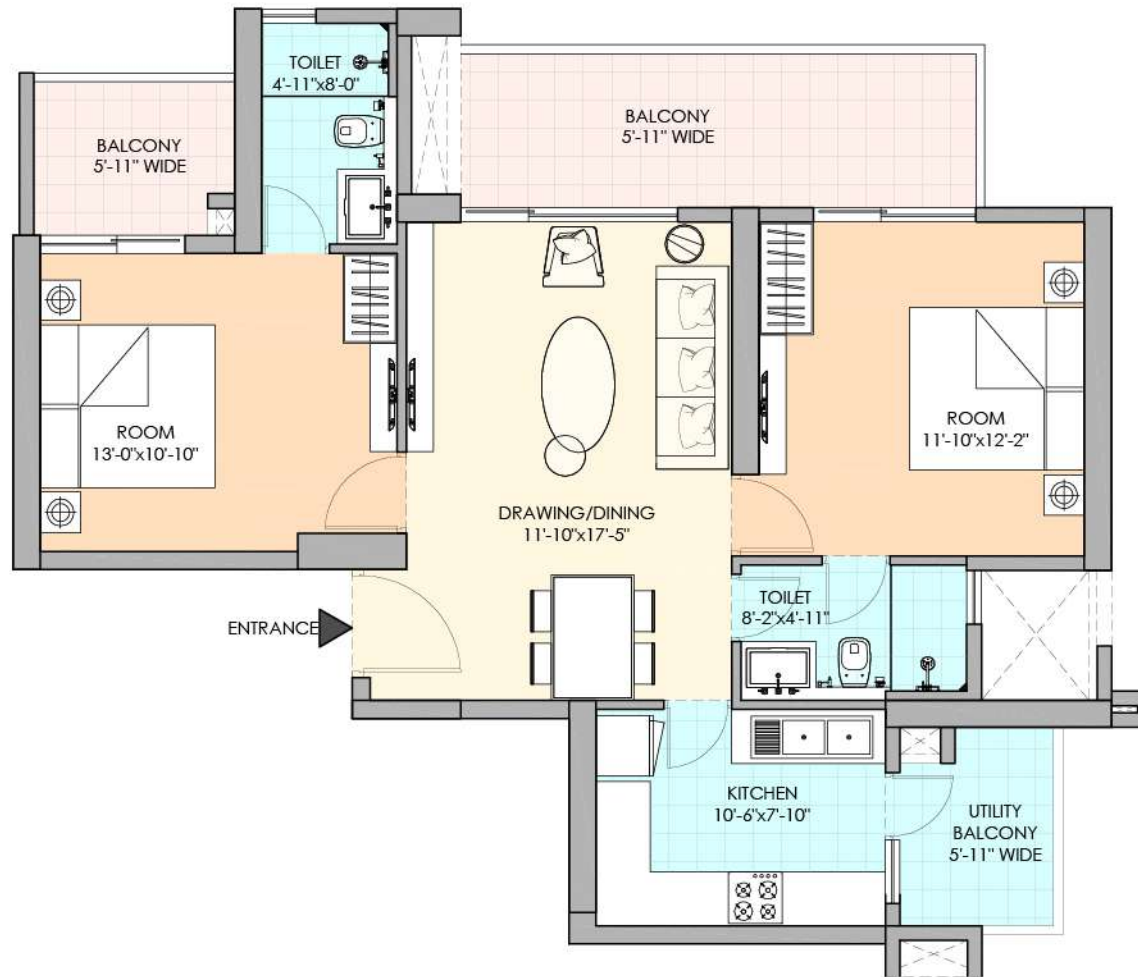
TOWER	UNIT	APARTMENT	LEVEL	SUPER AREA
02	01	TYPE -6/ 3 ROOM + 3 TOILET	3rd to 22nd, 24th to 47th	1828 Sqft

*Disclaimer: The floor plan / site plan / unit plan, as the case may be and as the situation and circumstances so warrant is to be read in conjunction with (i) License No. 15 of 2017 dt. 02.05.2017; (ii) submissions made by Company with HRERA; (iii) Building plans approved by DGTCP/DTCP vide Memo No. ZP-1147/SD/BS(2017/11857 dated 01.06.2017 and further revised vide Memo No. ZP-1147/SD/BS(2018/5252 dated 08.02.2018. Measurement herein are approximate and are for illustrative purposes only. Information herein may contain technical inaccuracies or typographical errors. While Promoter does not doubt the plans accuracy, no guarantee, warranty or representation as to the accuracy and completeness is being made. Allottee and/or its advisors should conduct a careful, independent investigation to its / their satisfaction. Plan(s) is/are intended to give a general indication of the proposed layout only. Site plans and landscaping are not intended to form part of any contract or warranty unless specifically incorporated in writing into the contract. Minor inaccuracies in square footage and inaccuracies in layout and room dimensions as shown on any plan will not excuse the Allottee from completing the purchase of the Unit without abatement in price and/or recourse against the Promoter. Dimensions are not intended to form part of any contract or warranty unless specifically incorporated in writing into the contract. *M3M Sky City* completed in Tower No. 2 and 3 (being an integral block/ consultant / segment of the residential component) of mixed-use development / project 'M3M 65th Avenue' a RERA registered Project (registered with Haryana Real Estate Regulatory Authority vide Reg. No. 01 of 2017 dt. 14.06.2017) which is being developed as licensed Mixed Use Colony on the land addressing 5.833 Hectares (14.4125 acres) situated in Sector 65, Gurugram - Manesar Urban Complex, Gurugram, Haryana, India. Licensed Land is owned by Manglam Multiplex Pvt. Ltd. and the development thereof is being carried out by Manglam Multiplex Pvt. Ltd. under brand name licensed by 'M3M' Development of the Project is regulated by the Real Estate (Regulation & Development) Act, 2016 (RERA Act), Haryana Real Estate (Regulation & Development) Rules, 2017 (H-RERA Rules) and The Haryana Real Estate Regulatory Authority, Gurugram Regulations, 2018 (HARERA Regulations). Copies of approvals of Project are available for inspection at the Company's office subject to prior appointment. Complete details of the Project including the specifications and amenities therein and other information and details are available. Website of RERA Authority: yet to be notified *Terms and Conditions apply. 1 Hect.=2.47105 Acres, 1 Acre=4840 sq.yds. or 4046.864 sq. mtrs., 1 sq.mtr.=1.076 sq.ft.



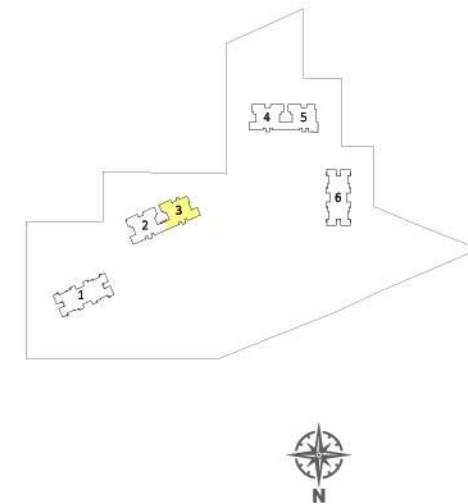
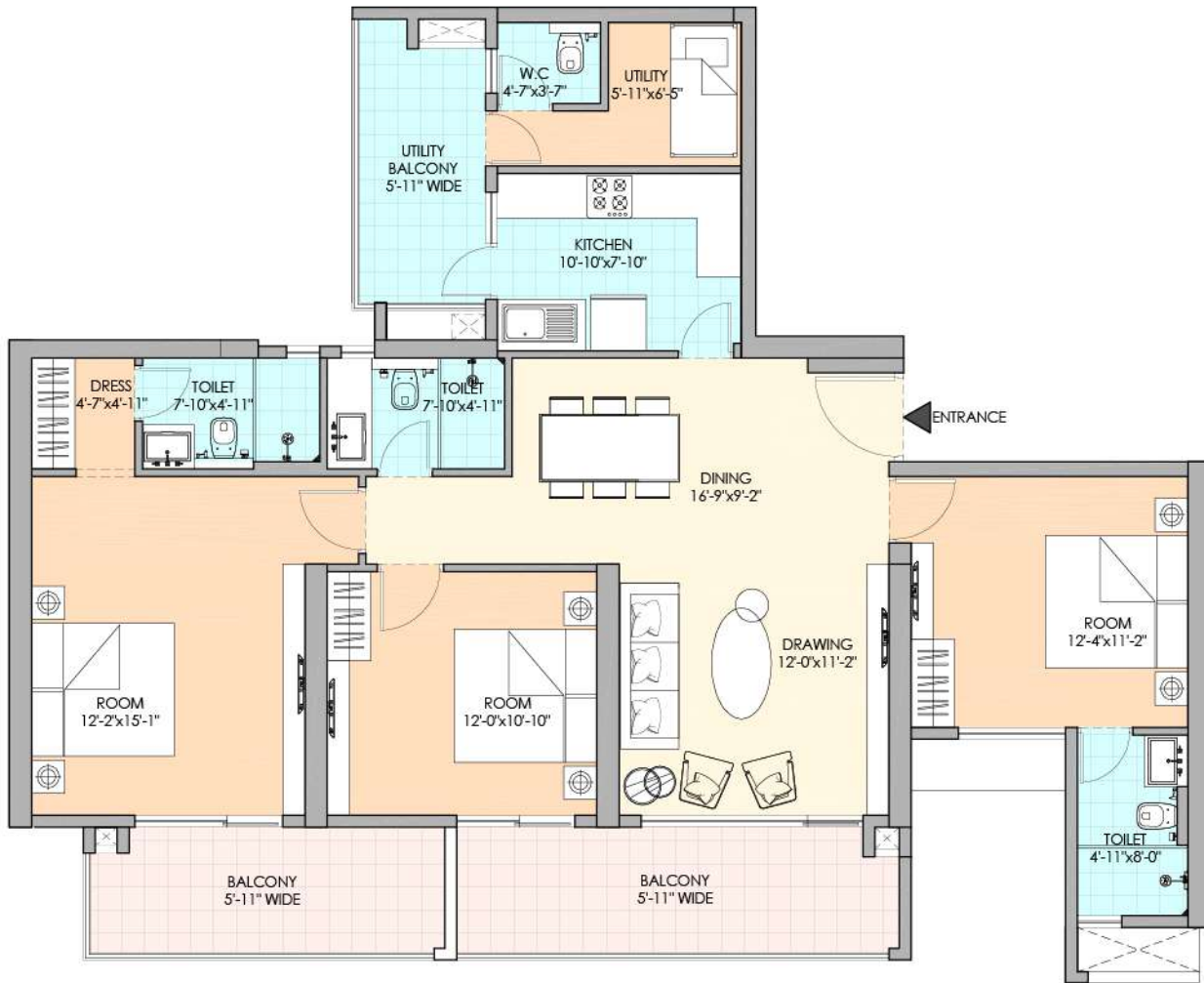
TOWER	UNIT	APARTMENT	LEVEL	SUPER AREA
02	02	TYPE -6/ 3 ROOM + 3 TOILET	3rd to 17th, 19th to 22th, 24th to 27th, 29th to 37th, 39th to 46th	1828 Sqft

*Disclaimer: The floor plan / site plan / unit plan, as the case may be and as the situation and circumstances so warrant is to be read in conjunction with (i) License No. 15 of 2017 dt. 02.05.2017; (ii) submissions made by Company with HRERA; (iii) Building plans approved by DGTCP/DTCP vide Memo No. ZP-1147/SD/BS/2017/11857 dated 01.06.2017 and further revised vide Memo No. ZP-1147/SD/BS/2018/5252 dated 08.02.2018. Measurement herein are approximate and are for illustrative purposes only. Information herein may contain technical inaccuracies or typographical errors. While Promoter does not doubt the plans accuracy, no guarantee, warranty or representation as to the accuracy and completeness is being made. Allottee and/or its advisors should conduct a careful, independent investigation to its / their satisfaction. Plan(s) is/are intended to give a general indication of the proposed layout only. Site plans and landscaping are not intended to form part of any contract or warranty unless specifically incorporated in writing into the contract. Minor inaccuracies in square footage and inaccuracies in layout and room dimensions as shown on any plan will not excuse the Allottee from completing the purchase of the Unit without abatement in price and/or recourse against the Promoter. Dimensions are not intended to form part of any contract or warranty unless specifically incorporated in writing into the contract. *M3M Sky City* completed in Tower No. 2 and 3 (being an integral block / consultant / segment of the residential component) of mixed-use development / project 'M3M 65th Avenue' a RERA-registered Project (registered with Haryana Real Estate Regulatory Authority vide Reg. No. 01 of 2017 dt. 14.06.2017) which is being developed as licensed Mixed Use Colony on the land addressing 5.833 Hectares (14.4125 acre) situated in Sector 65, Gurugram - Manesar Urban Complex, Gurugram, Haryana, India. Licensed Land is owned by Manglam Multiplex Pvt. Ltd. and the development thereof is being carried out by Manglam Multiplex Pvt. Ltd. under brand name licensed by 'M3M'. Development of the Project is regulated by the Real Estate (Regulation & Development) Act, 2016 (RERA Act), Haryana Real Estate (Regulation & Development) Rules, 2017 (H-RERA Rules) and The Haryana Real Estate Regulatory Authority, Gurugram Regulations, 2018 (HARERA Regulations). Copies of approvals of Project are available for inspection at the Company's office subject to prior appointment. Complete details of the Project including the specifications and amenities therein and other information and details are available. Website of RERA Authority yet to be notified *Terms and Conditions apply. 1 Hect.=2.47105 Acres, 1 Acre=4840 sq.yds. or 4046.864 sq. mtrs., 1 sq.mtr.=1.076 sq.ft.



TOWER	UNIT	APARTMENT	LEVEL	SUPER AREA
03	02	TYPE -2 2 ROOM + 2 TOILET	3rd to 22nd, 24th to 47th	1310 Sqft

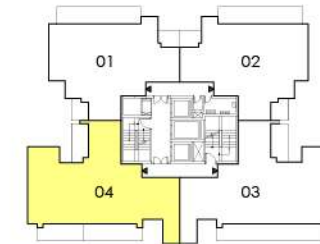
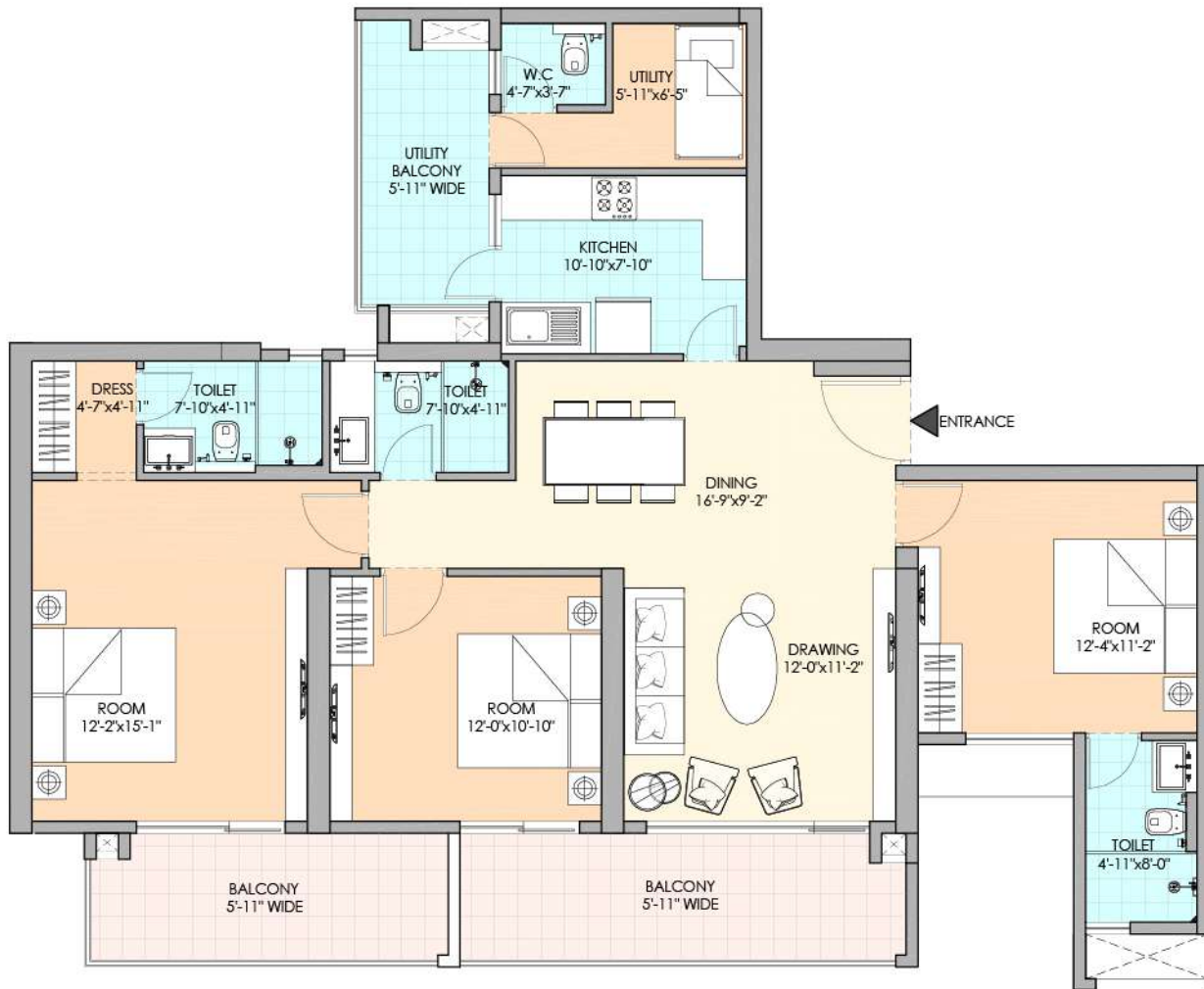
*Disclaimer: The floor plan / site plan / unit plan, as the case may be and as the situation and circumstances so warrant is to be read in conjunction with (i) License No. 15 of 2017 dt. 02.05.2017; (ii) submissions made by Company with HRERA; (iii) Building plans approved by DGTCP/DTCP vide Memo No. ZP-1147/SD/BS/2017/11857 dated 01.06.2017 and further revised vide Memo No. ZP-1147/SD/BS/2018/5252 dated 08.02.2018. Measurement herein are approximate and are for illustrative purposes only. Information herein may contain technical inaccuracies or typographical errors. While Promoter does not doubt the plans accuracy, no guarantee, warranty or representation as to the accuracy and completeness is being made. Allottee and/or its advisors should conduct a careful, independent investigation to its / their satisfaction. Plan(s) is/are intended to give a general indication of the proposed layout only. Site plans and landscaping are not intended to form part of any contract or warranty unless specifically incorporated in writing into the contract. Minor inaccuracies in square footage and inaccuracies in layout and room dimensions as shown on any plan will not excuse the Allottee from completing the purchase of the Unit without abatement in price and/or recourse against the Promoter. Dimensions are not intended to form part of any contract or warranty unless specifically incorporated in writing into the contract. *M3M Skycity' completed in Tower No. 2 and 3 (being an integral block / consultant / segment of the residential component) of mixed-use development / project 'M3M 65th Avenue', a RERA-registered Project (registered with Haryana Real Estate Regulatory Authority vide Reg. No. 01 of 2017 dt. 14.06.2017) which is being developed as licensed Mixed Use Colony on the land addressing 5.833 Hectares (14.4125 acres) situated in Sector 65, Gurugram - Manesar Urban Complex, Gurugram, Haryana, India. Licensed Land is owned by Manglam Multiplex Pvt. Ltd. and the development thereof is being carried out by Manglam Multiplex Pvt. Ltd. under brand name licensed by 'M3M'. Development of the Project is regulated by the Real Estate (Regulation & Development) Act, 2016 (RERA Act), Haryana Real Estate (Regulation & Development) Rules, 2017 (H-RERA Rules) and The Haryana Real Estate Regulatory Authority, Gurugram Regulations, 2018 (H-RERA Regulation). Copies of approvals of Project are available for inspection at the Company's office subject to prior appointment. Complete details of the Project including the specifications and amenities therein and other information and details are available. Website of RERA Authority: yet to be notified *Terms and Conditions apply. 1 Hect.=2.47105 Acres, 1 Acre=4840 sq.yds. or 4046.864 sq. mtrs., 1 sq.mtr.=1.076 sq.ft.



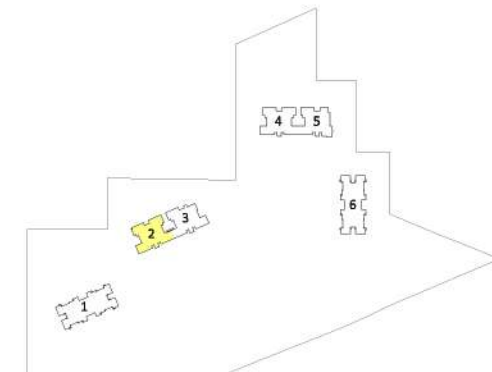
TOWER	UNIT	APARTMENT	LEVEL	SUPER AREA
03	04	TYPE -7 3 ROOM + 3 TOILET + UTILITY	3rd to 22nd, 24th to 47th	2054 Sqft

SITE KEY PLAN

*Disclaimer: The floor plan / site plan / unit plan, as the case may be and as the situation and circumstances so warrant is to be read in conjunction with (i) License No. 15 of 2017 dt. 02.05.2017; (ii) submissions made by Company with HRERA; (iii) Building plans approved by DGTCP/DTCP vide Memo No. ZP-1147/SD/BS/2017/11857 dated 01.06.2017 and further revised vide Memo No. ZP-1147/SD/BS/2018/5252 dated 08.02.2018. Measurement herein are approximate and are for illustrative purposes only. Information herein may contain technical inaccuracies or typographical errors. While Promoter does not doubt the plans accuracy, no guarantee, warranty or representation as to the accuracy and completeness is being made. Allottee and/or its advisors should conduct a careful, independent investigation to its / their satisfaction. Plan(s) is/are intended to give a general indication of the proposed layout only. Site plans and landscaping are not intended to form part of any contract or warranty unless specifically incorporated in writing into the contract. Minor inaccuracies in square footage and inaccuracies in layout and room dimensions as shown on any plan will not excuse the Allottee from completing the purchase of the Unit without abatement in price and/or recourse against the Promoter. Dimensions are not intended to form part of any contract or warranty unless specifically incorporated in writing into the contract. *M3M Sky City* completed in Tower No. 2 and 3 (being an integral block / consultant / segment of the residential component) of mixed use development / project 'M3M 65th Avenue', a RERA registered Project (registered with Haryana Real Estate Regulatory Authority vide Reg. No. 01 of 2017 dt. 14.06.2017) which is being developed as licensed Mixed Use Colony on the land addressing 5.833 Hectares (14.4125 acres) situated in Sector 65, Gurugram - Manesar Urban Complex, Gurugram, Haryana, India. Licensed Land is owned by Manglam Multiplex Pvt. Ltd. and the development thereof is being carried out by Manglam Multiplex Pvt. Ltd. under brand name licensed by 'M3M Development of the Project is regulated by the Real Estate (Regulation & Development) Act, 2016 (RERA Act), Haryana Real Estate (Regulation & Development) Rules, 2017 (H-RERA Rules) and The Haryana Real Estate Regulatory Authority, Gurugram Regulations, 2018 (H-RERA Regulations). Copies of approvals of Project are available for inspection at the Company's office subject to prior appointment. Complete details of the Project including the specifications and amenities therein and other information and details are available. Website of RERA Authority: yet to be notified *Terms and Conditions apply. 1 Hect.=2.47105 Acres, 1 Acre=4840 sq.yds. or 4046.864 sq. mtrs., 1 sq.mtr.=1.076 sq.ft.



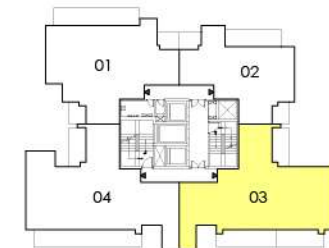
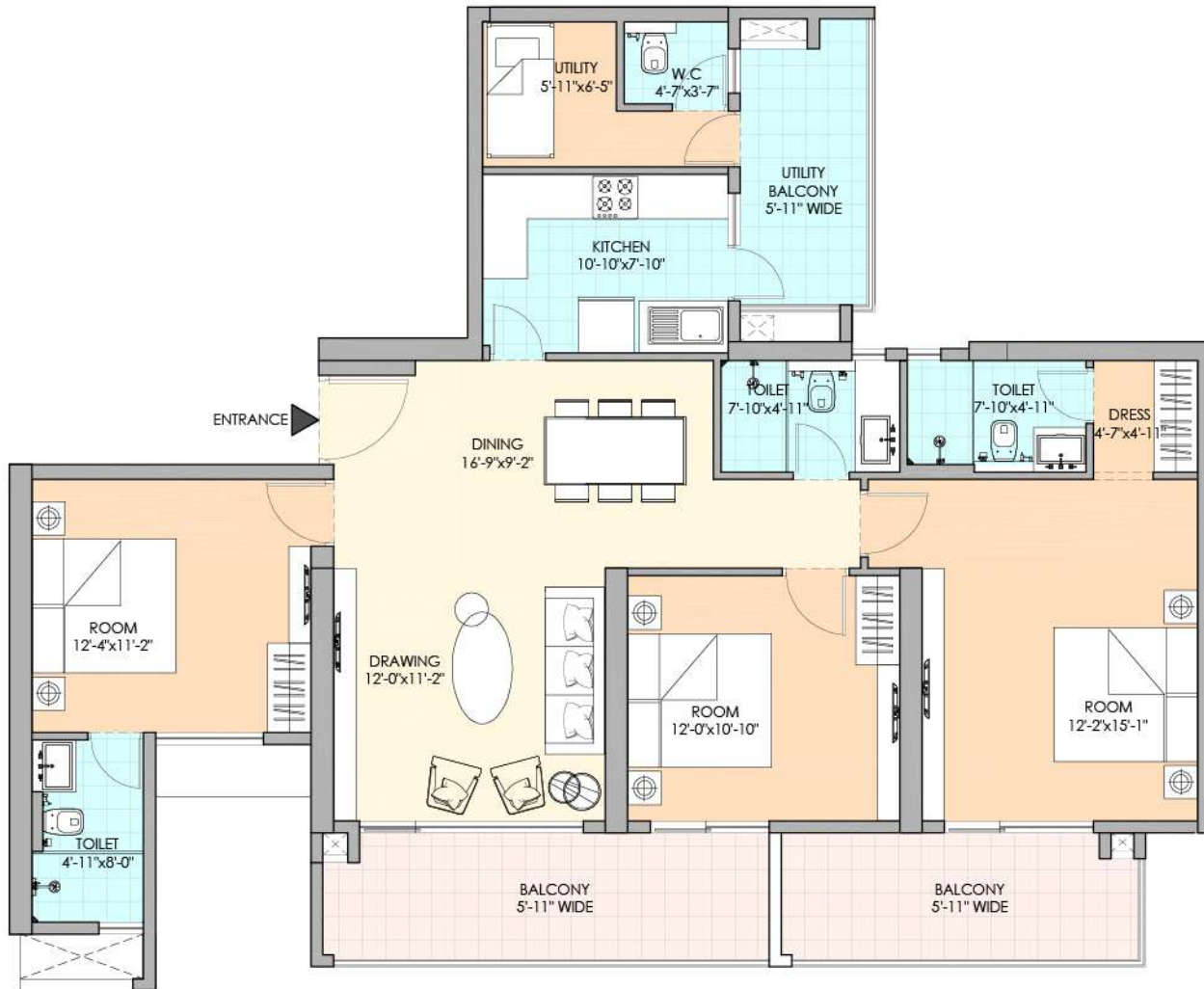
UNIT KEY PLAN



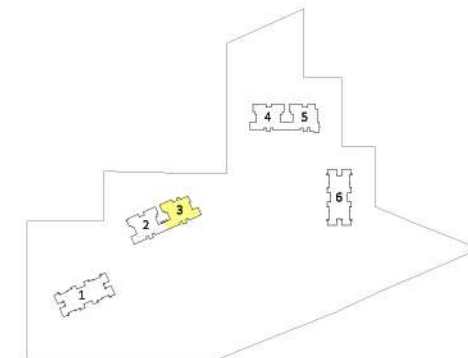
SITE KEY PLAN

TOWER	UNIT	APARTMENT	LEVEL	SUPER AREA
02	04	TYPE -7/ 3 ROOM + 3 TOILET + UTILITY	3rd to 22nd, 24th to 47th,	2054 Sqft

*Disclaimer: The floor plan / site plan / unit plan, as the case may be and as the situation and circumstances so warrant is to be read in conjunction with (i) License No. 15 of 2017 dt. 02.05.2017; (ii) submissions made by Company with HRERA; (iii) Building plans approved by DGTCP/DTCP vide Memo No. ZP-1147/SD/BS(2017/11857 dated 01.06.2017 and further revised vide Memo No. ZP-1147/SD/BS(2018/5252 dated 08.02.2018. Measurement herein are approximate and are for illustrative purposes only. Information herein may contain technical inaccuracies or typographical errors. While Promoter does not doubt the plans accuracy, no guarantee, warranty or representation as to the accuracy and completeness is being made. Allottee and/or its advisors should conduct a careful, independent investigation to its / their satisfaction. Plan(s) is/are intended to give a general indication of the proposed layout only. Site plans and landscaping are not intended to form part of any contract or warranty unless specifically incorporated in writing into the contract. Minor inaccuracies in square footage and inaccuracies in layout and room dimensions as shown on any plan will not excuse the Allottee from completing the purchase of the Unit without abatement in price and/or recourse against the Promoter. Dimensions are not intended to form part of any contract or warranty unless specifically incorporated in writing into the contract. *M3M Sky City* completed in Tower No. 2 and 3 (being an integral block / consultant / segment of the residential component) of mixed-use development / project 'M3M 65th Avenue', a RERA registered Project (registered with Haryana Real Estate Regulatory Authority vide Reg. No. 01 of 2017 dt. 14.06.2017) which is being developed as licensed Mixed Use Colony on the land addressing 5.833 Hectares (14.425 acres) situated in Sector 65, Gurugram - Manesar Urban Complex, Gurugram, Haryana, India. Licensed Land is owned by Manglam Multiplex Pvt. Ltd. and the development thereof is being carried out by Manglam Multiplex Pvt. Ltd. under brand name licensed by 'M3M'. Development of the Project is regulated by the Real Estate (Regulation & Development) Act, 2016 (RERA Act), Haryana Real Estate (Regulation & Development) Rules, 2017 (H-RERA Rules) and The Haryana Real Estate Regulatory Authority, Gurugram Regulations, 2018 (HARERA Regulations). Copies of approvals of Project are available for inspection at the Company's office subject to prior appointment. Complete details of the Project including the specifications and amenities therein and other information and details are available. Website of RERA Authority: yet to be notified *Terms and Conditions apply. 1 Hect.=2.47105 Acres, 1 Acre=4840 sq.yds. or 4046.864 sq. mtrs., 1 sq.mtr.=1.076 sq.ft.



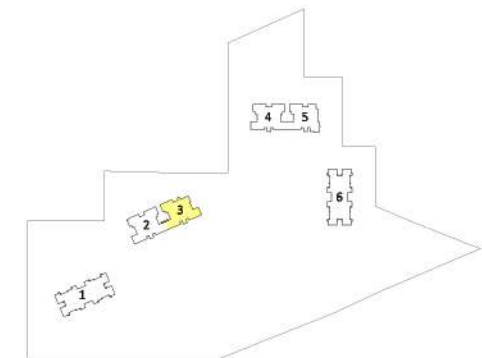
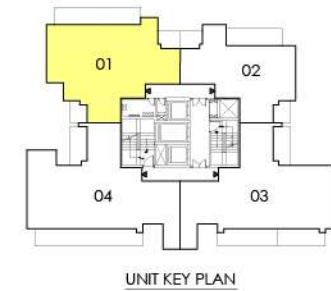
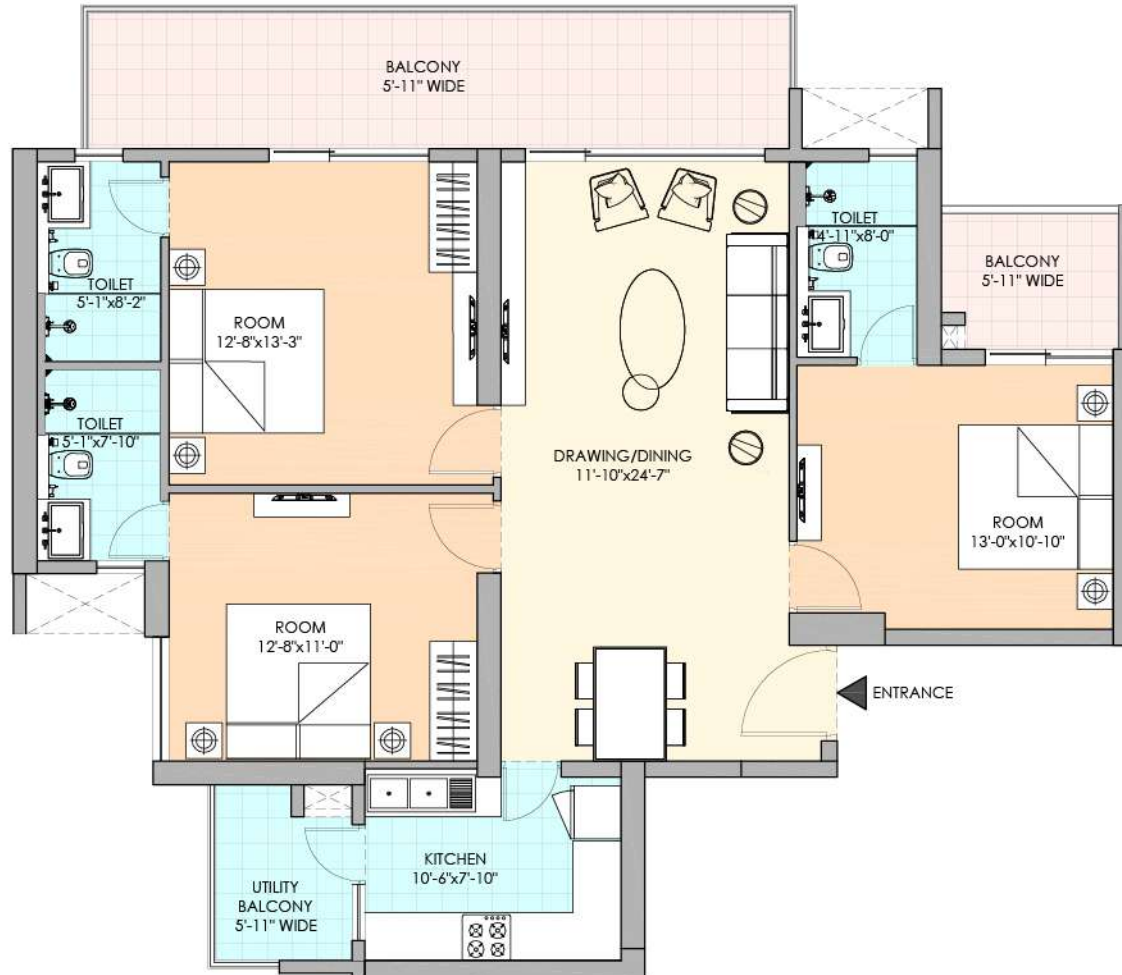
UNIT KEY PLAN



SITE KEY PLAN

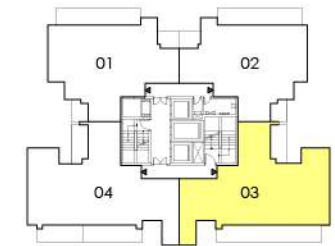
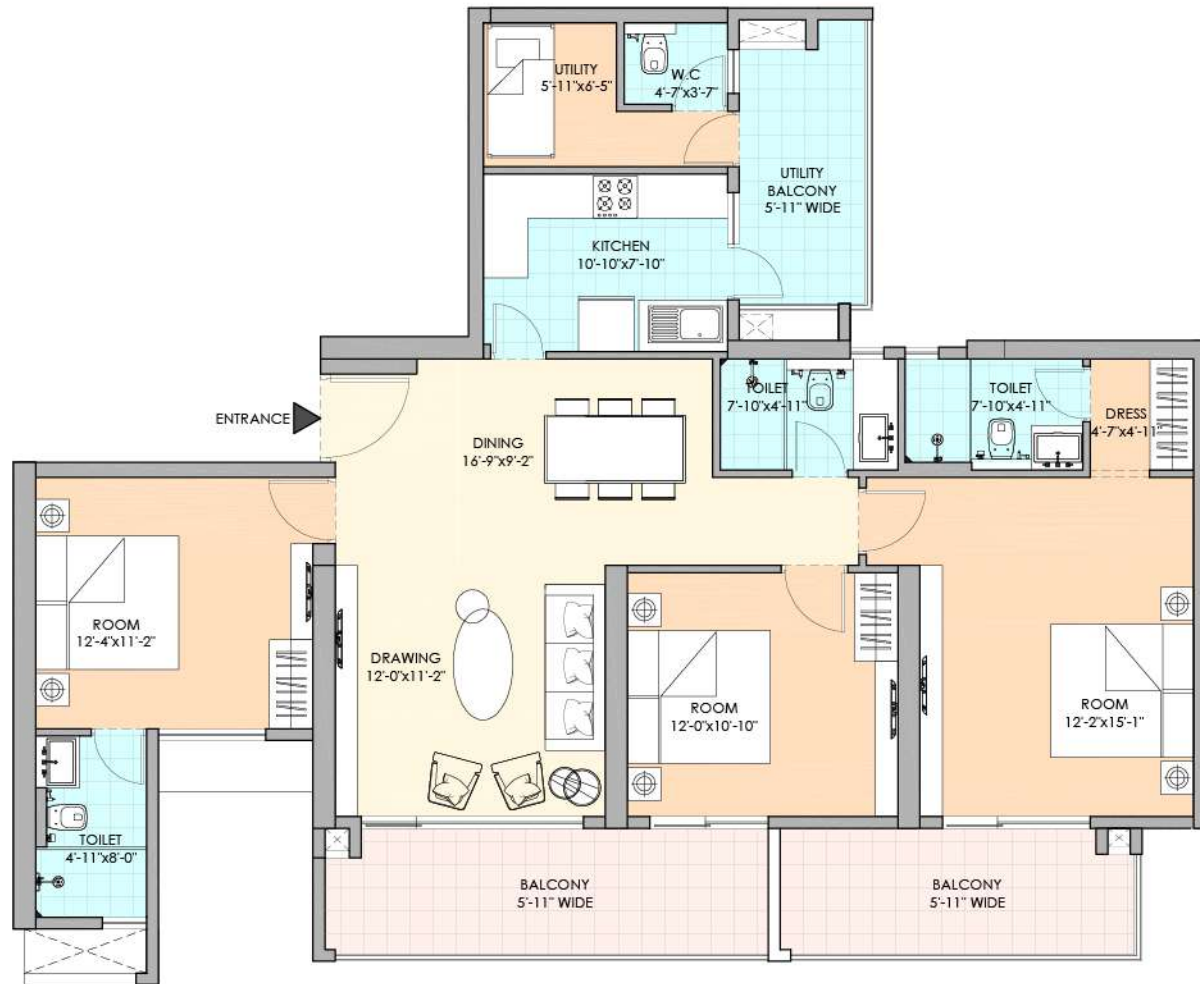
TOWER	UNIT	APARTMENT	LEVEL	SUPER AREA
03	03	TYPE -7 3 ROOM + 3 TOILET + UTILITY	3rd to 22nd, 24th to 47th	2054 Sqft

*Disclaimer: The floor plan / site plan / unit plan, as the case may be and as the situation and circumstances so warrant is to be read in conjunction with (i) License No. 15 of 2017 dt.02.05.2017; (ii) submissions made by Company with HRERA; (iii) Building plans approved by DGTCP/DTCP vide Memo No. ZP-1147/SD/BS/2017/11857 dated 01.06.2017 and further revised vide Memo No. ZP-1147/SD/BS/2018/5252 dated 08.02.2018. Measurement herein are approximate and are for illustrative purposes only. Information herein may contain technical inaccuracies or typographical errors. While Promoter does not doubt the plans accuracy, no guarantee, warranty or representation as to the accuracy and completeness is being made. Allottee and/or its advisors should conduct a careful, independent investigation to its / their satisfaction. Plan(s) is/are intended to give a general indication of the proposed layout only. Site plans and landscaping are not intended to form part of any contract or warranty unless specifically incorporated in writing into the contract. Minor inaccuracies in square footage and inaccuracies in layout and room dimensions as shown on any plan will not excuse the Allottee from completing the purchase of the Unit without abatement in price and/or recourse against the Promoter. Dimensions are not intended to form part of any contract or warranty unless specifically incorporated in writing into the contract. *M3M Sky City* completed in Tower No. 2 and 3 (being an integral block/consortium/segment of the residential component) of mixed-use development 'M3M 65th Avenue', a RERA-registered Project (registered with Haryana Real Estate Regulatory Authority vide Reg. No. 01 of 2017 dt. 14.06.2017) which is being developed as licensed Mixed Use Colony on the land addressing 5.833 Hectares (14.4125 acres) situated in Sector 65, Gurugram - Manesar Urban Complex, Gurugram, Haryana, India. Licensed Land is owned by Manglam Multiplex Pvt. Ltd. and the development thereof is being carried out by Manglam Multiplex Pvt. Ltd. under brand name licensed by 'M3M'. Development of the Project is regulated by the Real Estate (Regulation & Development) Act, 2016 (RERA Act), Haryana Real Estate (Regulation & Development) Rules, 2017 (H-RERA Rules) and The Haryana Real Estate Regulatory Authority, Gurugram Regulations, 2018 (H-RERA Regulations). Copies of approvals of Project are available for inspection at the Company's office subject to prior appointment. Complete details of the Project including the specifications and amenities therein and other information and details are available. Website of RERA Authority: yet to be notified *Terms and Conditions apply. 1 Hect.=2.47105 Acres, 1 Acre=4840 sq.yds. or 4046.864 sq. mtrs., 1 sq.mtr.=1.076 sq.ft.

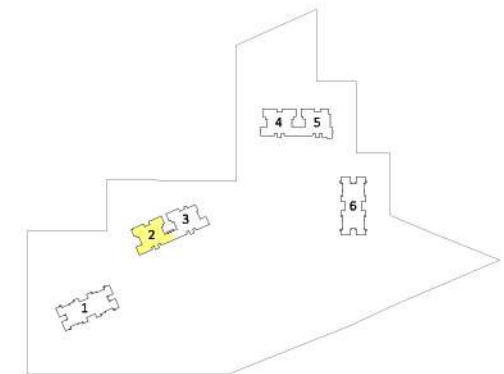


TOWER	UNIT	APARTMENT	LEVEL	SUPER AREA
03	01	TYPE -6 3 ROOM + 3 TOILET	3rd to 17th, 19th to 22nd, 24th to 27th 29th to 37th, 39th to 46th	1828 Sqft

*Disclaimer: The floor plan / site plan / unit plan, as the case may be and as the situation and circumstances so warrant is to be read in conjunction with (i) License No. 15 of 2017 dt. 02.05.2017; (ii) submissions made by Company with HRERA; (iii) Building plans approved by DGTCP/DTCP vide Memo No. ZP-1147/SD/BS(2017/11857 dated 01.06.2017 and further revised vide Memo No. ZP-1147/SD/BS(2018/5252 dated 08.02.2018. Measurement herein are approximate and are for illustrative purposes only. Information herein may contain technical inaccuracies or typographical errors. While Promoter does not doubt the plans accuracy, no guarantee, warranty or representation as to the accuracy and completeness is being made. Allottee and/or its advisors should conduct a careful, independent investigation to its / their satisfaction. Plan(s) is/are intended to give a general indication of the proposed layout only. Site plans and landscaping are not intended to form part of any contract or warranty unless specifically incorporated in writing into the contract. Minor inaccuracies in square footage and inaccuracies in layout and room dimensions as shown on any plan will not excuse the Allottee from completing the purchase of the Unit without abatement in price and/or recourse against the Promoter. Dimensions are not intended to form part of any contract or warranty unless specifically incorporated in writing into the contract. *M3M Sky City* completed in Tower No. 2 and 3 (being an integral block/consolidated/segment of the residential component) of mixed-use development / project 'M3M 65th Avenue', a RERA-registered Project (registered with Haryana Real Estate Regulatory Authority vide Reg. No. 01 of 2017 dt. 14.06.2017) which is being developed as licensed Mixed Use Colony on the land addressing 5.833 Hectares (14.4125 acres) situated in Sector 65, Gurugram - Manesar Urban Complex, Gurugram, Haryana, India. Licensed Land is owned by Manglam Multiplex Pvt. Ltd. and the development thereof is being carried out by Manglam Multiplex Pvt. Ltd. under brand name licensed by 'M3M' Development of the Project is regulated by the Real Estate (Regulation & Development) Act, 2016 (RERA Act), Haryana Real Estate (Regulation & Development) Rules, 2017 (H-RERA Rules) and The Haryana Real Estate Regulatory Authority, Gurugram Regulations, 2018 (HARERA Regulations). Copies of approvals of Project are available for inspection at the Company's office subject to prior appointment. Complete details of the Project including the specifications and amenities therein and other information and details are available. Website of RERA Authority: yet to be notified *Terms and Conditions apply. 1 Hect.=2.47105 Acres, 1 Acre=4840 sq.yds. or 4046.864 sq. mtrs., 1 sq.mtr.=1.076 sq.ft.



UNIT KEY PLAN



SITE KEY PLAN

TOWER	UNIT	APARTMENT	LEVEL	SUPER AREA
02	03	TYPE -7/ 3 ROOM + 3 TOILET + UTILITY	3rd to 22nd, 24th to 47th,	2040 Sqft

*Disclaimer: The floor plan / site plan / unit plan, as the case may be and as the situation and circumstances so warrant is to be read in conjunction with (i) License No. 15 of 2017 dt. 02.05.2017; (ii) submissions made by Company with HRERA; (iii) Building plans approved by DGTCP/DTCP vide Memo No. ZP-1147/SD/BS/2017/11857 dated 01.06.2017 and further revised vide Memo No. ZP-1147/SD/BS/2018/5252 dated 08.02.2018. Measurement herein are approximate and are for illustrative purposes only. Information herein may contain technical inaccuracies or typographical errors. While Promoter does not doubt the plans accuracy, no guarantee, warranty or representation as to the accuracy and completeness is being made. Allottee and/or its advisors should conduct a careful, independent investigation to its / their satisfaction. Plan(s) is/are intended to give a general indication of the proposed layout only. Site plans and landscaping are not intended to form part of any contract or warranty unless specifically incorporated in writing into the contract. Minor inaccuracies in square footage and inaccuracies in layout and room dimensions as shown on any plan will not excuse the Allottee from completing the purchase of the Unit without abatement in price and/or recourse against the Promoter. Dimensions are not intended to form part of any contract or warranty unless specifically incorporated in writing into the contract. *M3M Sky City* completed in Tower No. 2 and 3 (being an integral block/consolidated/segment of the residential component) of mixed-use development / project 'M3M 65th Avenue', a RERA-registered Project (registered with Haryana Real Estate Regulatory Authority vide Reg. No. 01 of 2017 dt. 14.06.2017) which is being developed as licensed Mixed Use Colony on the land addressing 5.833 Hectares [14.4125 acres] situated in Sector 65, Gurugram - Manesar Urban Complex, Gurugram, Haryana, India. Licensed Land is owned by Manglam Multiplex Pvt. Ltd. and the development thereof is being carried out by Manglam Multiplex Pvt. Ltd. under brand name licensed by *M3M. Development of the Project is regulated by the Real Estate (Regulation & Development) Act, 2016 (RERA Act), Haryana Real Estate (Regulation & Development) Rules, 2017 (H-RERA Rules) and The Haryana Real Estate Regulatory Authority, Gurugram Regulations, 2018 (H-RERA Regulations). Copies of approvals of Project are available for inspection at the Company's office subject to prior appointment. Complete details of the Project including the specifications and amenities therein and other information and details are available. Website of RERA Authority: yet to be notified *Terms and Conditions apply. 1 Hect.=2.47105 Acres, 1 Acre=4840 sq.yds. or 4046.864 sq. mtrs., 1 sq.mtr.=1.076 sq.ft.